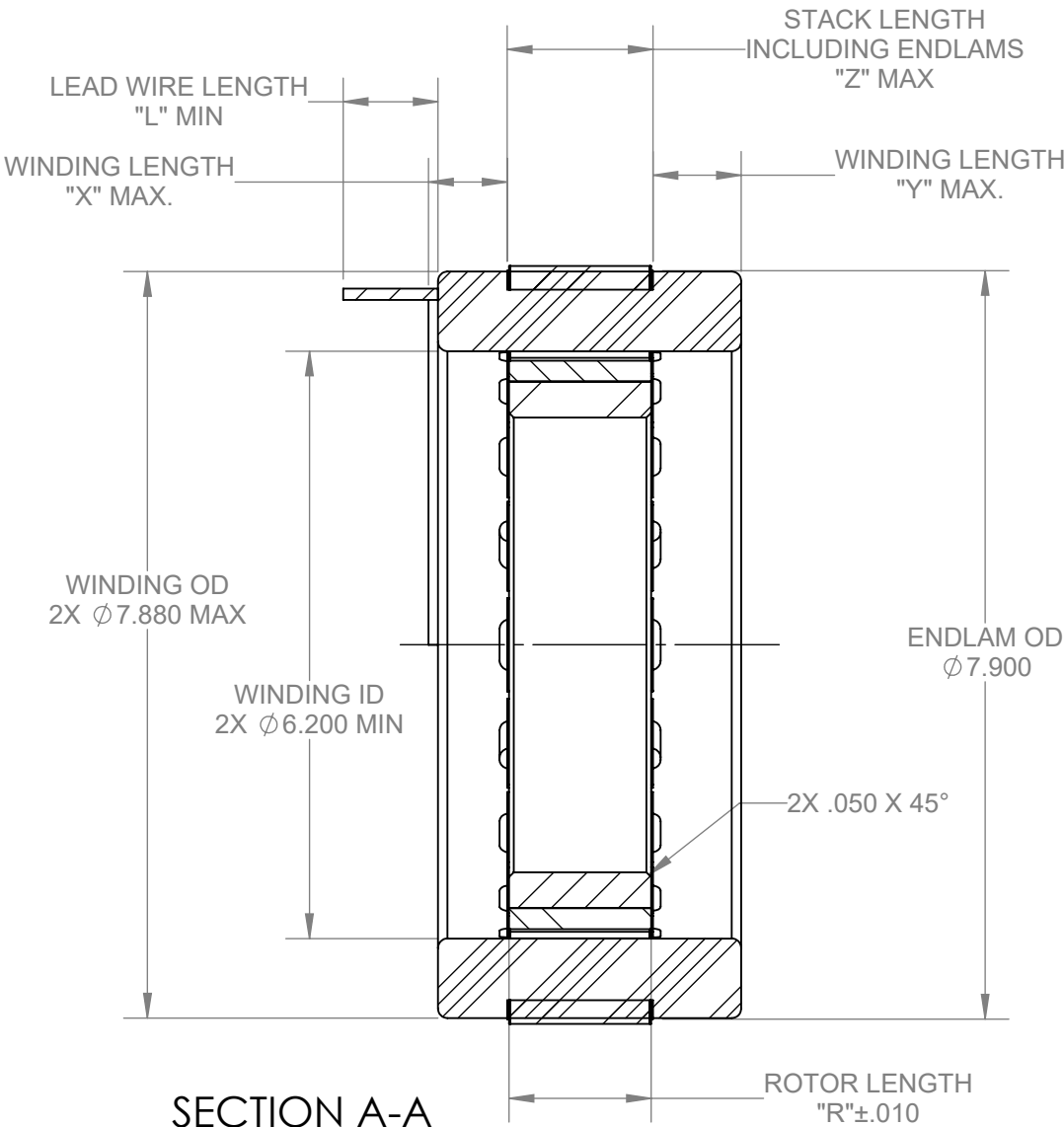
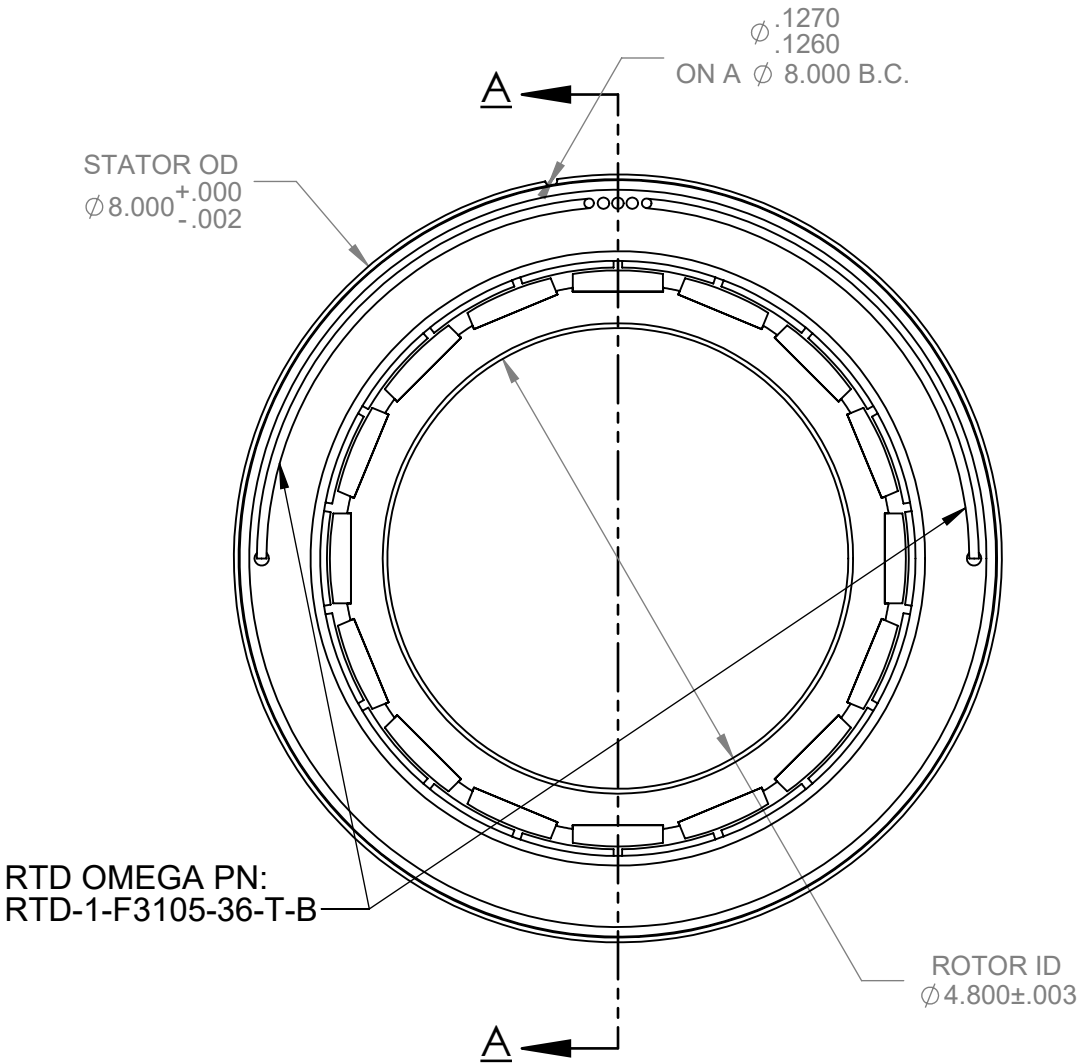


PROPRIETARY STATEMENT: THIS DOCUMENT CONTAINS CONFIDENTIAL INFORMATION PROPRIETARY TO AVEOX, INC. IT MAY NOT BE DUPLICATED IN WHOLE OR IN PART, DISCLOSED TO UNAUTHORIZED PERSONS, OR USED IN THE MANUFACTURE OF PARTS, ASSEMBLIES, OR FOR MANUFACTURING PROCESSES DEFINED HEREIN, WITHOUT PRIOR WRITTEN PERMISSION FROM AVEOX, INC.

REVISIONS			
REV.	DESCRIPTION	DATE	APPROVED
A	INITIAL RELEASE PER ECO # 7786	11/6/2019	SEE ECO APPROVAL

NOTES: (UNLESS OTHERWISE SPECIFIED)

1. STATOR LEAD WIRE PER M22759/9  
PHASE A: RED  
PHASE B: WHITE  
PHASE C: BLACK
2. SEE TABLE FOR CONFIGURATION



SECTION A-A  
SCALE 1 : 2

UNLESS OTHERWISE SPECIFIED: DIMENSIONS ARE IN INCHES			CONTRACT No.		AVEOX, INC. 2265A Ward Avenue Simi Valley, CA. 93065 805-915-0200 (Phone) 805-915-0201 (FAX)			
TOLERANCE ON ANGLE: $\pm 0.5^\circ$ ON DECIMALS: INCH MILLIMETER SURFACE( $\mu$ in.) .XX $\pm .01$ .X $\pm .5$ mm .XXX $\pm .005$ .XX $\pm .1$ mm REMOVE ALL BURRS BRAKE CORNERS R.005/.010. INTERPRET DRAWING PER ASME Y14.5-2009 DO NOT SCALE DRAWING DIMENSIONS APPLY AFTER SURFACE FINISH			APPROVALS		DATE		TITLE:	
			DRAWN		E. NG		11/6/19	
			CHECK					
			ENGINEER					
THIRD ANGLE PROJECTION 			SIZE		CAGE CODE		DWG No.	
			B		1C2S2		6100337-XX	
			SCALE: NONE		CALC. WEIGHT:		SHEET 1 OF 2	
							REV A	

4

3

2

1

PROPRIETARY STATEMENT: THIS DOCUMENT CONTAINS CONFIDENTIAL INFORMATION PROPRIETARY TO AVEOX, INC.  
IT MAY NOT BE DUPLICATED IN WHOLE OR IN PART, DISCLOSED TO UNAUTHORIZED PERSONS, OR USED IN THE MANUFACTURE  
OF PARTS, ASSEMBLIES, OR FOR MANUFACTURING PROCESSES DEFINED HEREIN, WITHOUT PRIOR WRITTEN PERMISSION FROM AVEOX, INC.

REVISIONS			
REV.	DESCRIPTION	DATE	APPROVED
-	See Sheet1	-	-

PART NUMBER	DESCRIPTION	ROTOR LENGTH "R"	LEAD WIRE AWG	LEAD WIRE LENGTH "L"	STACK LENGTH "Z" INCLUDING ENDLAM	ENDTURN HEIGHT, LEAD SIDE "X"	ENDTURN HEIGHT, BOTTOM "Y"
6100337-01	O&M DWG STATOR AND ROTOR SET 8015-16P/10, SENSORLESS	1.500	12	12	1.58	0.83	0.93
6100337-02	O&M DWG STATOR AND ROTOR SET 8020-16P/10, SENSORLESS	2.000	12	12	2.08	0.83	0.93
6100337-03	O&M DWG STATOR AND ROTOR SET 8030-16P/10, SENSORLESS	3.000	12	12	3.08	0.83	0.93
6100337-04	O&M DWG STATOR AND ROTOR SET 8040-16P/10, SENSORLESS	4.000	12	12	4.08	0.83	0.93
6100337-05	O&M DWG STATOR AND ROTOR SET 8060-16P/8, SENSORLESS	6.000	12	12	6.08	0.83	0.93

AVEOX

POWER TO MOTION

AVEOX, INC.

2265A Ward Avenue Simi Valley, CA. 93065

805-915-0200 (Phone) 805-915-0201 (FAX)

TITLE:

O&M DWG STATOR AND ROTOR SET  
8000-16P, SENSORLESS, TABULATED

SIZE	CAGE CODE	DWG No.	REV
B	1C2S2	6100337-XX	A

SCALE: NONE	SHEET	2 OF 2
-------------	-------	--------

FORM: 6890115-02 Rev. C

B

A